

WELCOME TO FUHUA PRIMARY SCHOOL

P1 2026 Orientation

Fri 21 Nov 2025



OUR VISION
Every Fuhua Gem – Learner, Leader and Innovator

OUR MISSION
Creating Opportunities · Leading Learning · Building Communities

FUHUA
PRIMARY SCHOOL



AGENDA

1. Preparing for Primary 1

- Guiding your child to be independent
- Preparing for Day 1

2. School Rules

3. Home-School Partnership

- Information channels
- Communicating with teachers

4. General Information

- Buying books & uniforms
- School hours
- Arrival and dismissal procedures
- Picking up your child early
- Buying food at canteen
- Student protection plan
- Photos / videos of students
- School Vendors

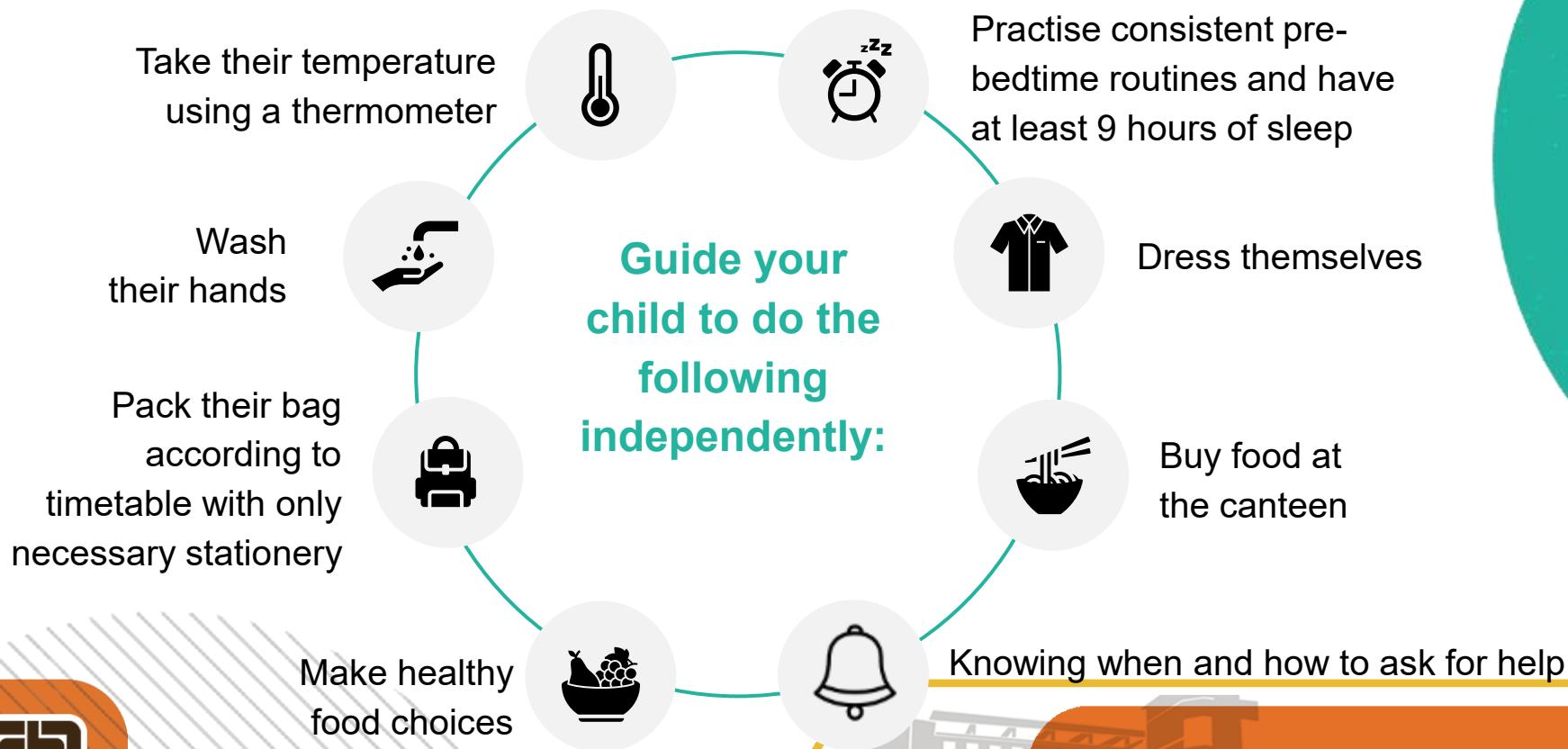
5. First Week of School

- School hours
- Items to bring
- Class 2026

PREPARING FOR PRIMARY 1

Developing Good Habits

Routines help your child build confidence and learn to manage things by themselves.



Every Fuhua Gem – Learner, Leader and Innovator



Begin your parenting journey with us

@parentingwith.moesg

Follow us on Instagram for bite-sized and actionable parenting tips to tackle the everyday demands of parenting.

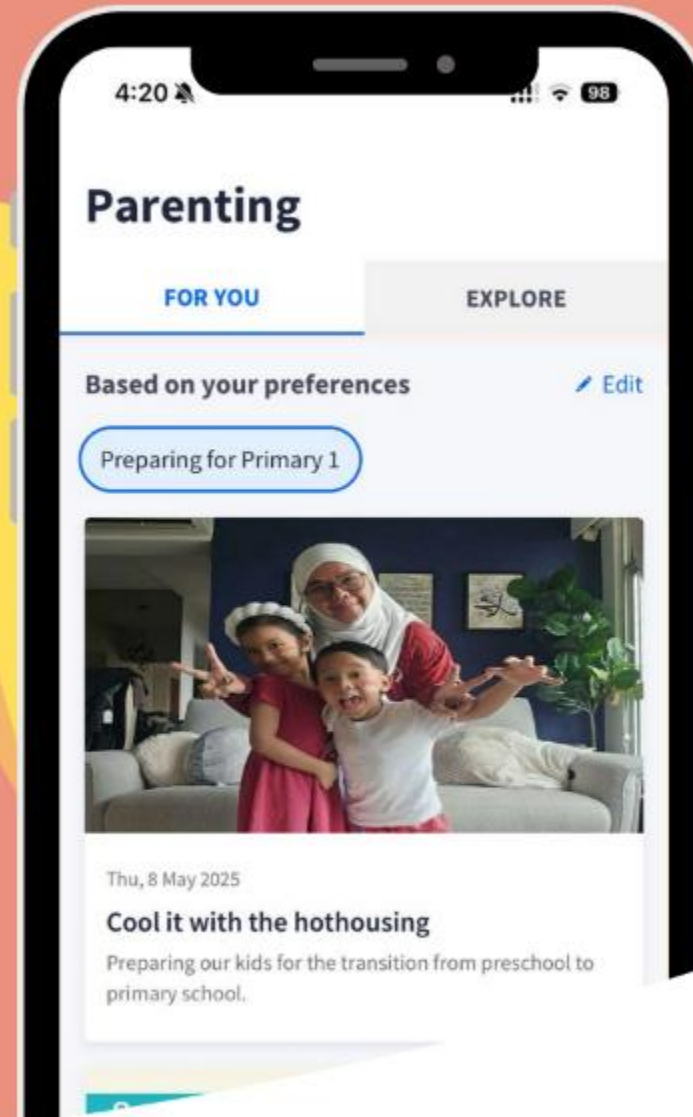




Parenting Resources on Parents Gateway (PG)

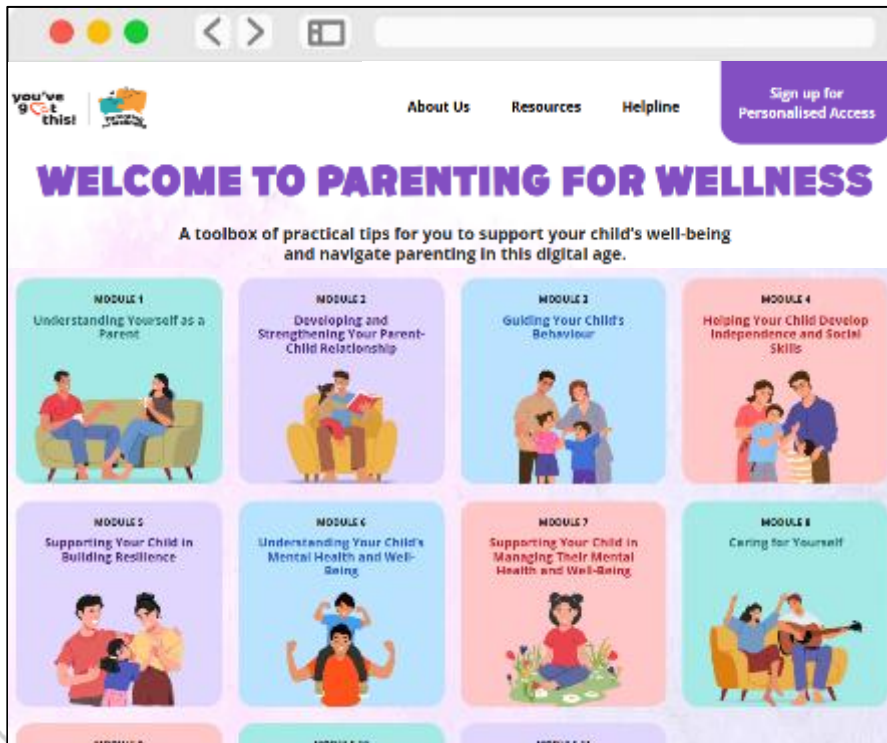


Discover rich and customisable parenting resources on topics such as preparing for Primary 1, forging parent-child relationships and education pathways.



Parenting for Wellness

An initiative to empower parents with key knowledge and skills to build strong parent-child relationships, strengthen their children's mental well-being and resilience, and parent effectively in the digital age.



The Toolbox for Parents **comprises bite-sized practical tips and strategies for parents**, such as ways to create a safe and nurturing home environment, build resilience in children, and stay safe online.

The **Website** offers **customised tips and resources tailored for individual parent**, including curated module recommendations, and allows you to easily track your parenting journey through a personalised dashboard.

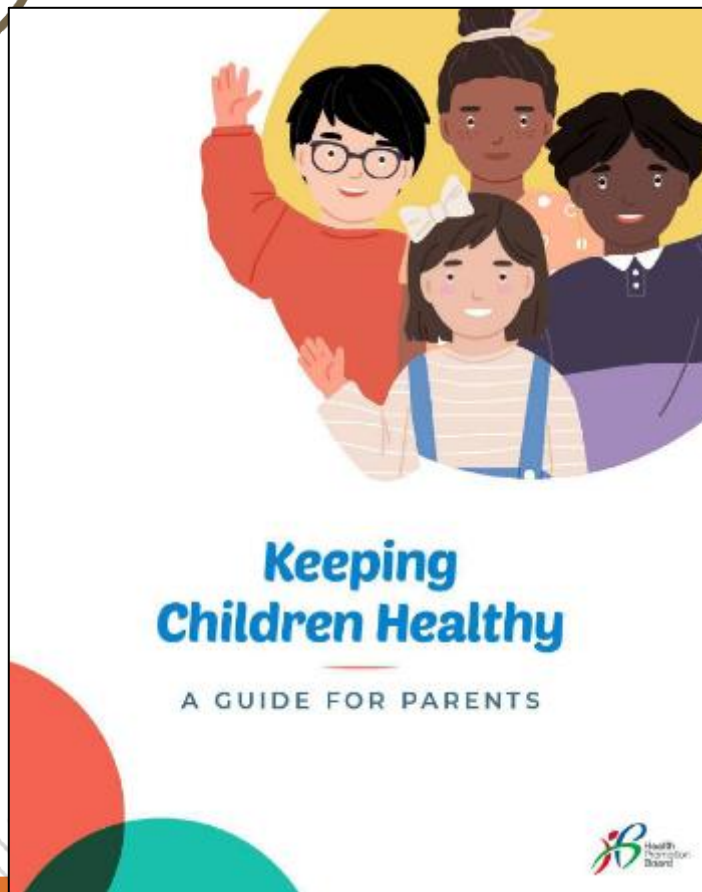


Toolbox



Website

Keeping Children Healthy



Edition 1



Edition 2



Edition 3

SCHOOLBAG

CHECK US OUT!

PARTNERING YOU ON YOUR EDUCATION JOURNEY

New look, new features,
same good content

[Schoolbag.edu.sg](https://schoolbag.edu.sg)

Hear from fellow parents,
MOE educators and more.
Subscribe today!

go.gov.sg/schoolbag-subscribe



Available online!

Parent-Child Activity Book



10 TIPS FOR PARENTS

to help you navigate your child's first year in primary school.



Chat with your child

Boost their confidence

Practise various scenarios

Create something interesting

Thank others for their help

Pledge to do things together

How else can you support your child?

Support

your child and encourage them to overcome challenges with your care

Affirm

your child by recognising small successes and praising their efforts

Familiarise

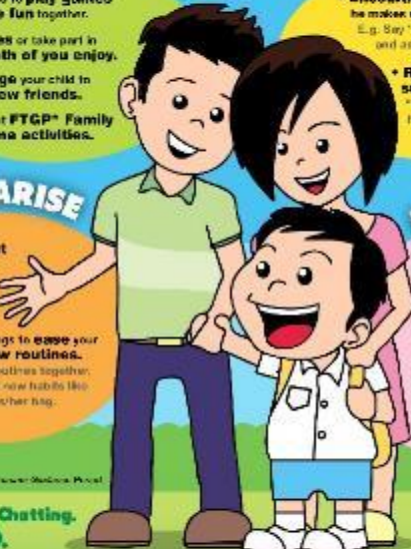
your child with new routines gradually and share your experiences in primary school

Empathise

with and acknowledge your child's feelings

Supporting your child's transition through
Primary 1

Build a caring home environment to nurture the social and emotional skills of your child using these S.A.F.E. tips.



SUPPORT

- Commit some time every weekend to **play games** and **have fun** together.
- **Visit places** or take part in events that **both of you** enjoy.
- **Encourage** your child to make **new friends**.
- Try out **FTGP*** Family Time activities.

AFFIRM

- **Encourage** your child when he makes **observations**.
E.g. Say "That's interesting!" and ask why he/she said that.
- **Recognise small successes**. E.g. Say "You've made another new friend in class - well done!"

FAMILIARISE

- Find out what primary schools have in store for students these days.
- Do practical things to **ease your child into new routines**.
E.g. Plan daily routines together; teach your child new habits like packing his/her bag.

EMPATHISE

- **Teach** your child words that **describe feelings**.
- **Acknowledge** your child's **emotions**.
E.g. "It's okay to feel anxious about starting school."
- **Understand** your child's **needs**. E.g. Start bedtime early. Children need a lot of sleep.

Spend Time Chatting. Use I.A.D.

Talk	Ask	Discuss
Talk about fond memories of your own school days. E.g. What you did in Primary One; kind teachers and chatty classmates you had.	Ask about his/her thoughts and feelings about the school. E.g. FTGP* activities; when he/she felt happy.	Discuss together what can be done if he/she has worries at school. E.g. Explore how people deal with conflicts.

QUICK TIPS

- Listen without interrupting.
- Nod your head and ask questions to show interest and affirmation.

*Please take note: The use of words of "I" when talking to your child is not recommended. Using "I" words can give your child a message that the adult is not happy and may not be able to help him/her. It is better to use "we" words when talking to your child.

Ministry of Education Singapore



SCHOOL RULES

SCHOOL RULES

- Love Yourself
- Love Others
- Love Our School
- Love Our Country



LOVE YOURSELF



LOVE YOURSELF

- Students are to wear the **prescribed school uniform / PE attire** without any modification
- The **name tag** should be sewn on the school shirt / blouse and PE T-shirt
- **PE T-shirts and shorts/skorts** are to be worn on days of house meetings, PAL days and designated PE days
- The **sun hat** is part of the school uniform and is used during learning journeys.
- Wear **black sports shoes with black shoelaces and school socks**.

SCHOOL UNIFORM & PE ATTIRE



ATTIRE FOR BOYS AND GIRLS

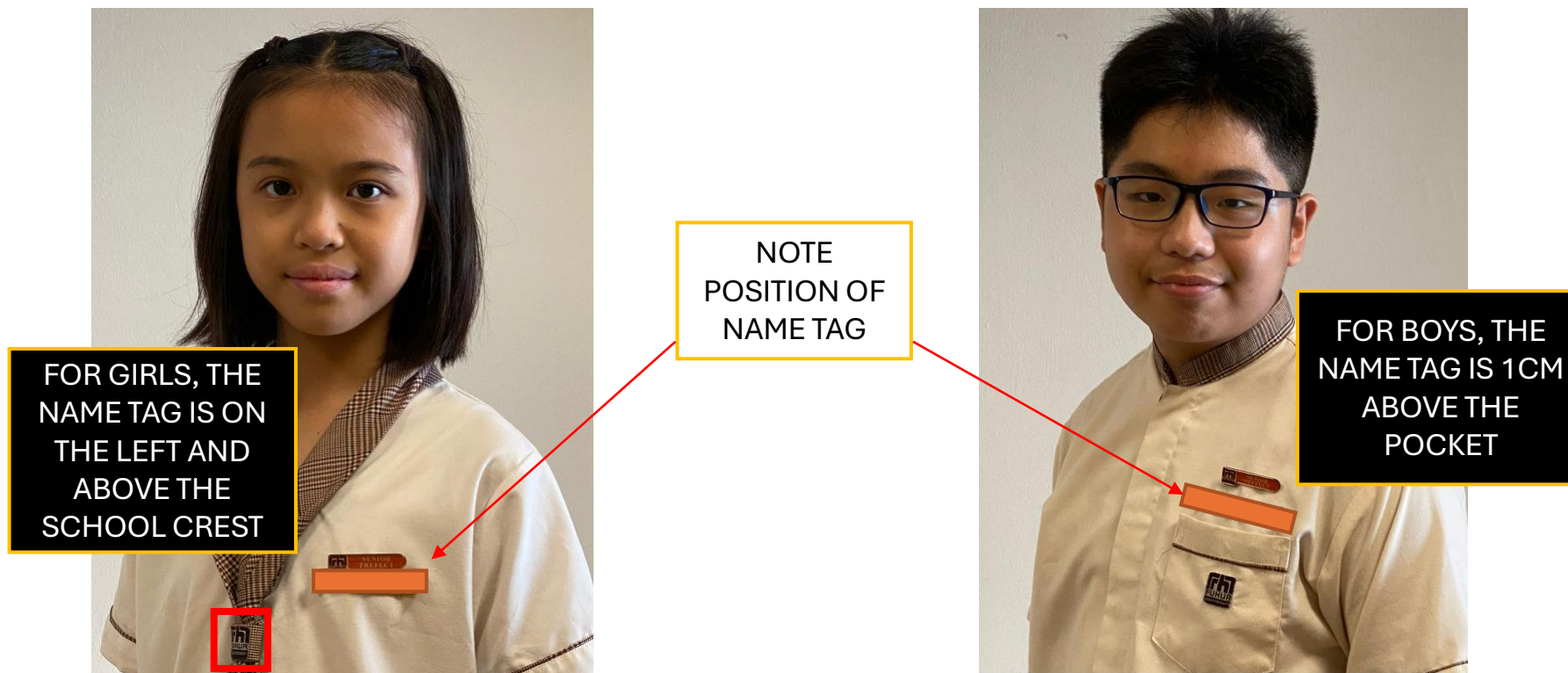
Modifications to the school uniform / PE attire are not allowed



PE ATTIRE FOR BOYS AND GIRLS

Band on sleeves indicates house colour

SCHOOL UNIFORM – NAME TAGS



ATTIRE FOR BOYS AND GIRLS

SCHOOL SHOES AND SUN HAT



- Black Sports Shoes with black shoelaces **ONLY**.
- School socks or white socks that are above the ankles.
- School socks and shoes can be purchased from the uniform supplier.



- Sun hat can be purchased from the uniform supplier.
- It is used during Learning Journeys or students can use it on the way home on sunny days.

SCHOOL BAG



- Buy a **school bag of lightweight material** that your child can carry as he/she moves to different classes. Avoid trolley bags as these can be bulky and difficult for your child to use on the stairs.
- **Label** your child's bag, water bottle, wallet, pencil case and other items clearly
- **Pack the bag** according to the timetable for the day. If your child forgets to bring any materials, he / she must take responsibility for it. Forgotten items are not to be brought to school by parents / caregivers.
- **Lockers** are available for students to leave materials that may not be needed on a daily basis

LOVE YOURSELF

- Hair should be well-combed and **not coloured / dyed / highlighted / gelled / have haircut lines**.
- Hair should be **short and neat**, with the fringe above the eyebrows. Spiky hairstyles are not allowed.
- Girls may use **black / brown hair accessories**.
- **Fingernails** must be kept short and clean.
- **Jewellery, ornaments or fashion accessories** are not to be worn. Girls may wear a small pair of ear studs, not dangling earrings.
- Students must **arrive in school by 7.30am**.



LOVE YOURSELF

- Students are **not to use mobile devices during school hours** including recess, CCA and after-school programme (e.g. support and enrichment classes)
- **Mobile devices must be switched off and kept in their school bags** during school-hours and after-school programmes.
- Students **can only use mobile devices at designated areas** (basketball court, playground and the learning space in front of the General Office).
- Students must **take personal responsibility for their mobile devices** and ensure that they are always kept securely in their school bags.
- The **school will not be responsible for damage or loss** of mobile devices.
- **Mobile devices will be confiscated** if students fail to comply with the above rules and will be handed over to parents/guardians.
- The above rules **does not apply to non-telecommunication devices**, e.g. POSB Smart Buddy Watch.



LOVE OTHERS

- Students must be courteous, kind and respectful to their peers and school staff.
- **The school does not condone bullying.** Action will be taken against students caught bullying.
- Students are also **not allowed to have in their possession any weapon or weapon-like item** which is used or intended to be used to cause harm to others.



An aerial photograph of Fuhua Primary School, a modern multi-story building with a colorful facade of red, blue, yellow, and green panels. The school is surrounded by lush green trees and a red brick courtyard. In the background, a dense urban landscape with high-rise apartment buildings is visible under a clear blue sky. The school's name, 'FUHUA PRIMARY SCHOOL', is written in yellow letters on a blue band across the middle of the building.

LOVE OUR SCHOOL

- Students are expected to be good ambassadors of the school.
- They are to keep the school clean.
- Eating is allowed in the canteen only.
- For a safe environment for all, students are expected to abide by safe rules of play.

LOVE OUR COUNTRY

- Students who are Singapore Citizens are to sing the National Anthem and take the pledge.



STUDENT ORGANISER



- Sold as compulsory item as part of the book list
- Complete page 2 on personal particulars
- Go through it with your child to reiterate the school values, school rules etc

SCHOOL CORE VALUES 'RECIPE'

Respect

Worth of Self and Others

Care

Social and Civic Responsibility

Integrity

True to Self and Others

Perseverance

Going the Extra Mile With a "Dare to Do!" Spirit

Excellence

Commitment Towards Excellence and Learning

SCHOOL RULES

School rules are established to guide students the appropriate and safe ways to behave in school. It promotes a conducive learning environment for everyone.

In Fuhua Primary School, all Fuhua GEMS

- have a strong sense of right and wrong,
- receive with a grateful heart and contribute beyond, and
- serve and lead in bettering the lives of others.



Student Information

PERSONAL PARTICULARS

Name: _____ Class Register No: _____

Class: _____

SIXER House Group: _____ CCA Group: _____

SIXER House Teacher: _____ CCA Teacher: _____

Home Address: _____

Medical Condition (if any): _____

Food / Drug allergy (if any): _____

MODE OF DISMISSAL

School Bus/Bus No	Public Transport	Walking Home	Fetches by Parent/ Caregiver

AFTER SCHOOL CARE ARRANGEMENT

Student Care Centre I am attending: _____

Student Care Centre contact no.: _____

SIBLINGS IN FUHUA PRIMARY SCHOOL

Name: _____ Class: _____

Name: _____ Class: _____

Name: _____ Class: _____

IN CASE OF EMERGENCY

Name of Parent/Guardian: _____

Relationship: _____

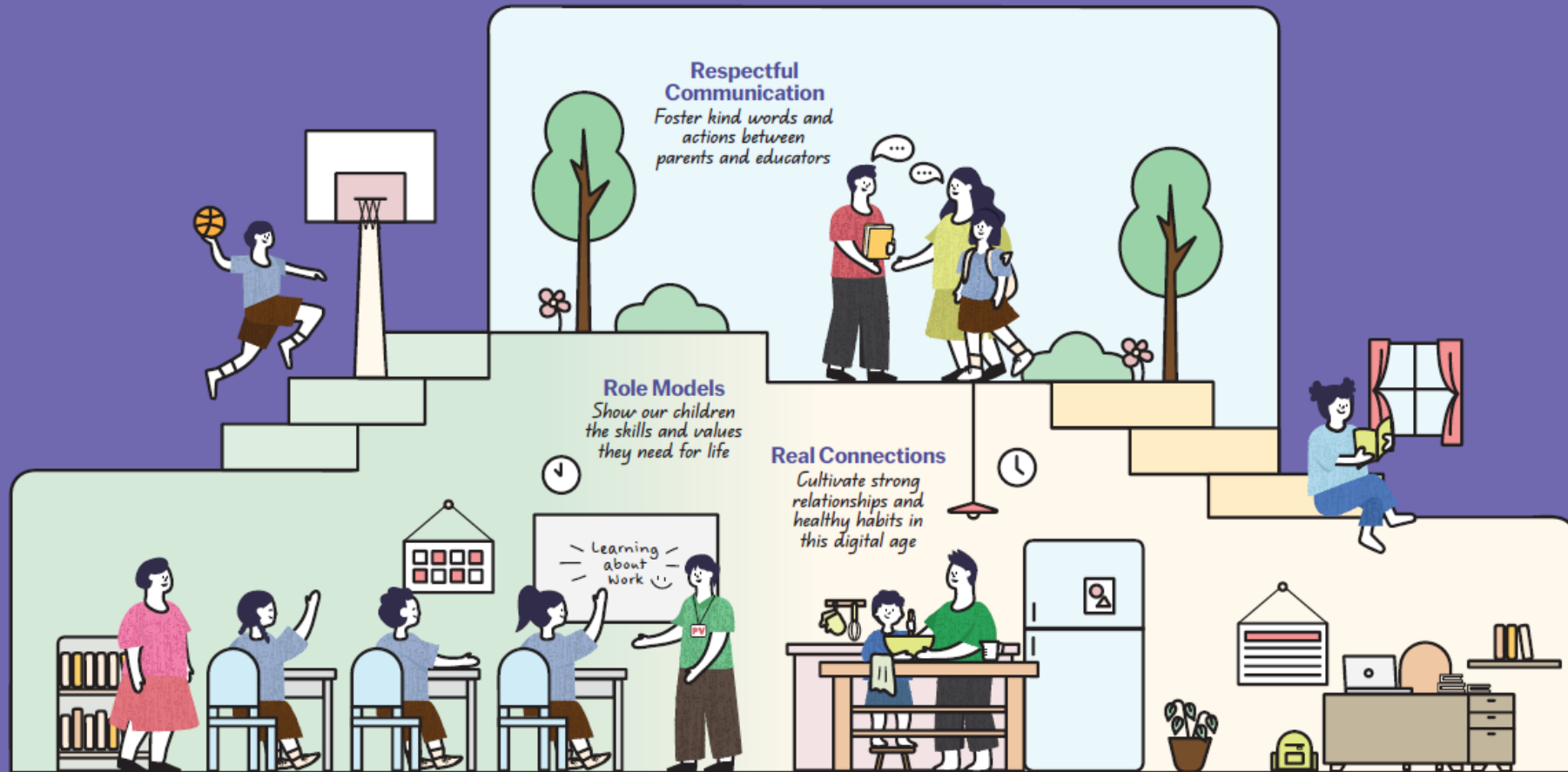
Contact Number: _____ (Handphone) _____ (Home)

It is the responsibility of parents/guardians to update the school if there is a change in contact details so that the school is able to reach them in case of emergency.

HOME-SCHOOL PARTNERSHIP

Guidelines for School-Home Partnership

Raising a Happy, Confident, and Kind Generation Together



A joint effort in 2024 by
the Ministry of Education and COMPASS

Respectful Communication

Foster kind words and actions between parents and educators



- Listen to and understand each other's perspectives and concerns regarding each child.
- Communicate kindly using official channels. Teachers are not required to share their personal mobile numbers.
- Respect each other's time by communicating during working hours.

Role Models

Show our children the skills and values they need for life



- Practise gratitude and find joy in everyday experiences with our children.
- Instil confidence by encouraging responsibility and believing in each child's abilities.
- Model good values in words and actions, at school and at home.

Real Connections

Cultivate strong relationships and healthy habits in this digital age



- Build strong bonds through shared experiences and meaningful conversations.
- Establish good habits for our children to stay confident and in control of their technology use.
- Provide a balanced mix of engaging online and offline activities, at school and at home.

INFORMATION CHANNELS

PARENTS	STUDENTS
Parents Gateway (PG) <ul style="list-style-type: none">• Letters / Information• Consent Forms	Morning Assembly
School Website http://fuhuapri.moe.edu.sg/ School Instagram fuhua_pri School Facebook https://www.facebook.com/FuhuaPrimary Email fhps@moe.edu.sg	CCA Boards
Student Organiser	Student Learning Space (SLS)

PARENTS GATEWAY

NAME OF CHILD

TO-DO

COMPLETED

Delete

KH



MINISTRY OF EDUCATION
Posted on: 8 Oct 2023

Advisory for the Management of Haze Situation

Dear Parents/Guardians,

Delete

KH



SEK KOK CHUAN, MERVYN
Posted on: 3 Oct 2023

Zoom Link for JC2 Graduation Ceremony: Fri
6 Oct, 9.30 a.m.

Services



Declare travels

Not available



School Calendar



Parenting
Resources



SchoolFinder



eGIRO Setup



Edusave Standing
Order



Financial assistance

Download
Parents
Gateway app
on your
mobile phone,
if you have
not done so.

FROM MOE

FROM
SCHOOL

COMMUNICATING WITH TEACHERS

- Communication times: **7.00 a.m. – 5.00 p.m. on school days**
- Communicate via email / message in student organizer / message left at General Office.
- For face-to-face meetings, make appointment 3 working days in advance to avoid disappointment.
- Response time for queries:
 - 3 working days (general query)
 - 7 working days (query requires some investigation)
 - 21 working days (query with complexities)

CONTACTING DURING EMERGENCIES

- Ensure that **parents' / guardians' contact numbers** are always updated.
- Inform us of any **pre-existing medical condition** such as allergies as diagnosed by doctor. Indicate clearly “what will happen i.e. symptoms”, “whether life threatening” and “what action is needed”.

GENERAL INFORMATION

WHEN TO BUY BOOKS & UNIFORMS

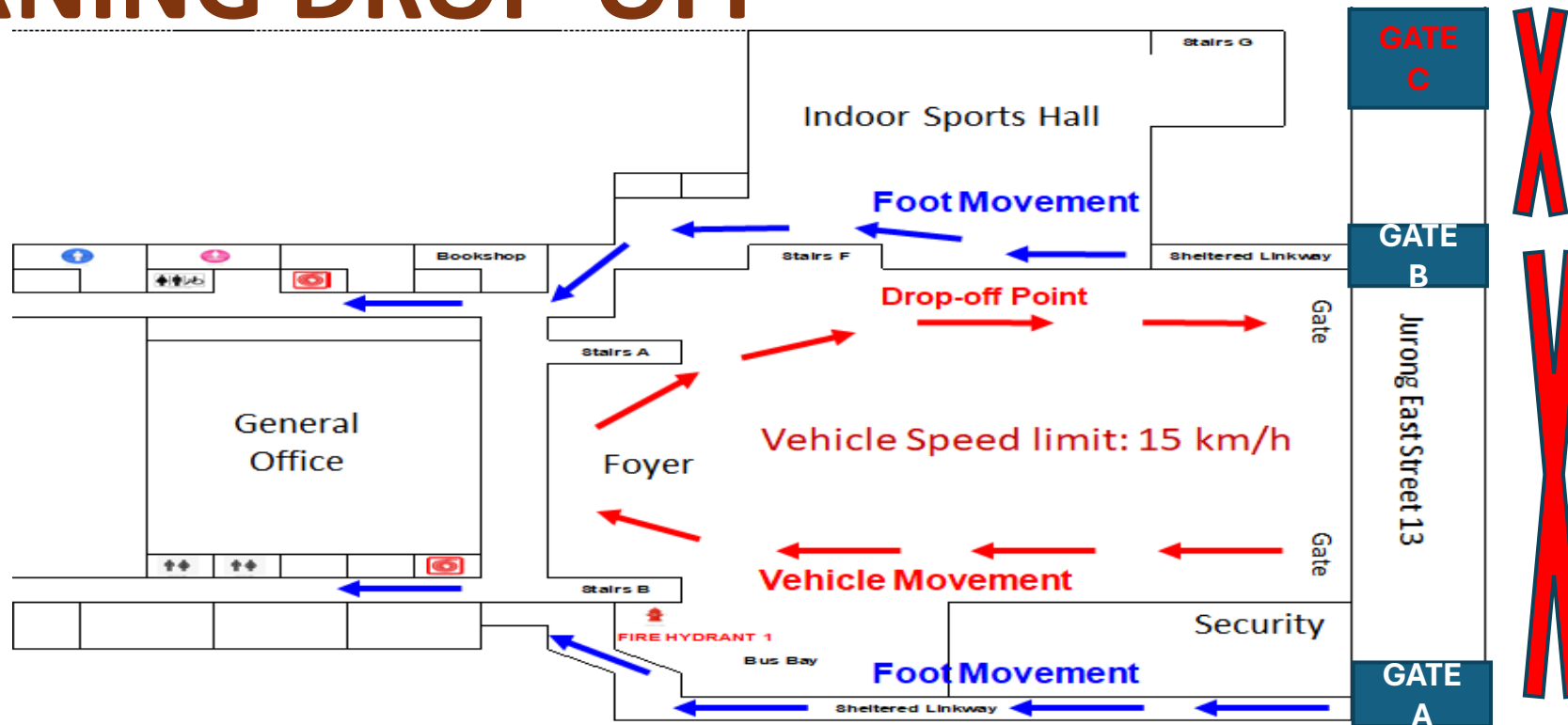
Dates	Times	Venue
21 Nov	9am – 3pm	Bookshop & Basketball Court (uniforms)
26, 27, 28 Nov		
1, 2, 3 Dec		
11, 12 Dec		
22, 23 Dec		
26 Dec		
29, 30 Dec		

SCHOOL HOURS

Days	Start Time	Dismissal Time / Gate
Mondays to Fridays	7.30 am (students who arrive after this are considered late)	1.30 pm (for P1 & P2) Dismissal at Gate B

*Recess is from 9.30 am to 10 am.
P1 and P4 will share the recess.*

MORNING DROP-OFF



Note:

1. Students use **Gates A & B at arrival. Do not walk across the vehicle gate for safety reasons.**
2. Do not drop off your child outside the school gates for their own safety.
3. P1s & P2s use Gate B for dismissal.
4. Do not leave your car unattended while waiting for your child. Park your car at the nearest car park.

PICKING UP YOUR CHILD EARLY

- If your child is unwell, administrative staff will contact you to pick him / her. Your child will **not** be allowed to leave school alone.
- Register at Guard House and put on the visitor label
- Report to the General Office
- Do not go directly to the classroom as the **Classroom Blocks are strictly out of bounds to all visitors.**
- You will be issued with a slip “**Permission To Leave School Early**” to pass to the security guards when you and your child leave.

BUYING FOOD AT CANTEEN

w.e.f 03 Jan 2023



FUHUA
PRIMARY SCHOOL

FUHUA IDENTITY ▾

FUHUA EXPERIENCE ▾

HIGHLIGHTS ▾

GENERAL INFORMATION ▾

HOME / GENERAL INFORMATION / RESOURCE FOR PARENTS / CANTEEN MENU

Canteen Menu

School Administration ▾

School Vendors ▾

Guidelines and Policies ▾

Resources for Teachers

Resource for Parents ^



Resources for Parents

Canteen Menu (New Price w.e.f 03 Jan 2023)

- 1) [Canteen Stall 1](#)
- 2) [Canteen Stall 2](#)
- 3) [Canteen Stall 3](#)
- 4) [Canteen Stall 4](#)
- 5) [Canteen Stall 6](#)
- 6) [Canteen Stall 7](#)
- 7) [Canteen Stall 8](#)

Stall No. 7

(Chinese Rice Stall)

VEGETARIAN
Food
is available

Brown Rice/Fried Rice + 1 Meat + 1 Vegetable/Egg + Fruit	\$2.00
Brown Rice/Fried Rice + 1 Meat + 2 Vegetable/Egg + Fruit	\$2.30
Brown Rice/Fried Rice + 2 Meat + 1 Vegetable/Egg + Fruit	\$2.50

Other Items:

- Drumstick \$0.80
- Yakitori \$0.80
- Additional Soy Sauce Chicken/Sweet & Sour Fish & etc \$0.90
- Additional Veg/Tofu/Egg/Potato/2pcs Meatball/2pcs Wanton \$0.50
- Sushi (Box of 4) \$1.50
 - Vegetarian – Cucumber / Egg
 - Non-Vegetarian – Crabstick



- Steamed Egg in Chicken Broth \$1.00



Every Fuhua Gem – Learner, Leader and Innovator

BUYING FOOD AT CANTEEN

- Cashless payment is available through the POSB Smart Buddy Watch / ezlink card
- Healthy Meals in School Programme (HMSP) guidelines are followed
- Food prices - \$2.30 / \$2.50
- Menu will be available by end-December at <https://fuhuapri.moe.edu.sg/general-information/resources-for-parents/canteen-menu>

STUDENT PROTECTION PLAN

- MOE provides basic insurance coverage for students for immediate help during emergencies.
- Parents are encouraged to take up insurance beyond the MOE insurance coverage.



PHOTOS / VIDEOS OF STUDENTS

- The school will occasionally take **photographs / videos of students to create awareness of school activities and celebrate the learning and achievements** of our students. These will be **used on the school's website, school's official social media platforms, school's publications or other communication channels**. In the use of photographs and videos, we exercise discretion and responsibility.
- Photographs / video recordings may also be taken during **various educational activities including classroom lessons, assessments, presentations, and learning activities**. The school may use these recordings **for educational purposes including assessment, instruction, professional development, and improving teaching and learning practices**. Recordings will be stored securely and used only by authorized school personnel for legitimate educational purposes.
- If you do not wish your child / ward to be featured in these materials, please inform the school via <https://go.gov.sg/fhpsphotographynonconsent>.

SCHOOL VENDORS

Vendor Name	Details
Actlink Marketing Pte Ltd (BOOKSHOP) <i>Till 31 Mar 2026</i>	<ul style="list-style-type: none"> • Open from 9 am – 3pm • Lunch 1 – 1.45pm • Contact – 9815 1531 • Email – storders@actlink.com.sg • Online orders available
NewGen Transport Services Pte Ltd (BUS SERVICE)	<ul style="list-style-type: none"> • Contact – Tel: 98393452 / operation@newgentpt.com (Mr Paul Pang)
Finest Fashion Centre (SCHOOL UNIFORMS)	<ul style="list-style-type: none"> • Contact – 6466 5697 / 9026 9738 • In school from 10 am to 3 pm on Tuesdays
Nascans Pte Ltd (STUDENT CARE CENTRE)	<ul style="list-style-type: none"> • Contact – fhscc@nascans.com / 8198 9716 • 10 am to 7 pm (during school term) • 7.30 am to 7 pm (during school holidays)

FIRST WEEK OF SCHOOL

SCHOOL HOURS

DATE	SCHOOL HOURS
FRI 2 JAN 2026	7.30 AM – 10.30 AM <i>(parents are allowed to accompany child on Day 1)</i>
MON 5 JAN 2026	7.30 AM – 10.30 AM
TUES 6 JAN 2026 onwards	7.30 AM – 1.30 PM

ITEMS TO BRING

Writing Materials (2 pencils, eraser, ruler) in a small pencil case

Storybook that your child can read

Student Organiser

(to be purchased at bookshop as part of compulsory items)

Water bottle

Allowance to buy food at canteen or packed meal

Care Pack (sanitiser, face mask, tissue paper, wet wipes to be placed in a resealable bag)

Thermometer (given by school on day 1)



CLASSING AND FORM TEACHERS 2026

- Groupings are Orientation (A1, A2 ...) and classrooms used ≠ 2026 P1 classes or classrooms
- Final allocation will be confirmed by late-Dec 2025

Help your child succeed in life

Our children do best when schools and parents work hand in hand to support them. Here are some tips to make this happen...

Work with the school to know and support your child

- Have regular conversations with teachers in both academic and non-academic areas - this will help you better guide your child's development.
- Check the teachers' preferred mode of communication - they are not required to share their mobile numbers.
- Understand that teachers may not be able to respond to your queries immediately.

Help your child relate to others

- Work with the teachers to help your child respect differences and resolve disagreements amicably.
- Let the school verify the facts in any incident before taking action to ensure a fair, objective outcome for all parties.



Help your child develop good habits

- Create a conducive home environment for your child to enjoy reading and to finish his/her homework by himself/herself.
- Encourage your child to live a healthy, balanced life with time for sleep and play.

Help your child manage himself/herself

- Guide your child in managing his/her time.
- Encourage your child to help out with household chores.

Our children succeed when parents and schools work hand in hand.



Ministry of Education
SINGAPORE

